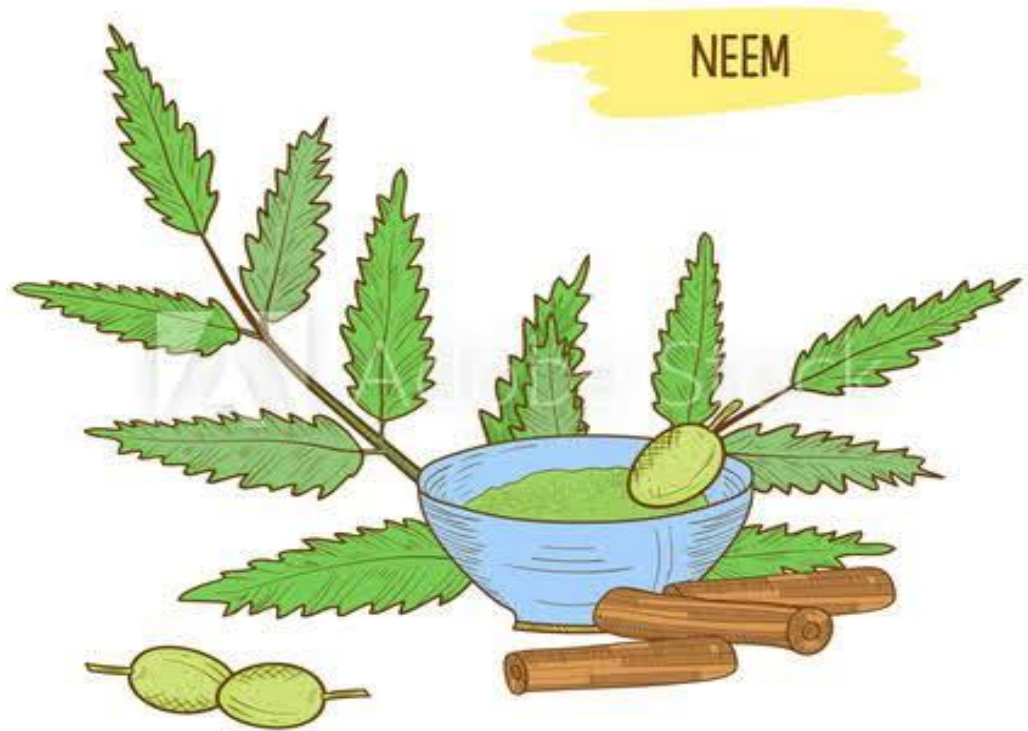


The leaves of some plants are used as medicine that's why these plants are called medicinal plants. Example: Neem, Tulsi, Mint



TULSI



Pudhina

The leaves of the plants are used in many ways:-

The leaves of some plants are used to eat.

Example: Beetle leaves, Spinach, Coriander.



Beetle leaves



Spinach



Coriander

*The leaves of some plants are used for decoration.
Example: Palm leaves, Banana leaves, Mango leaves*



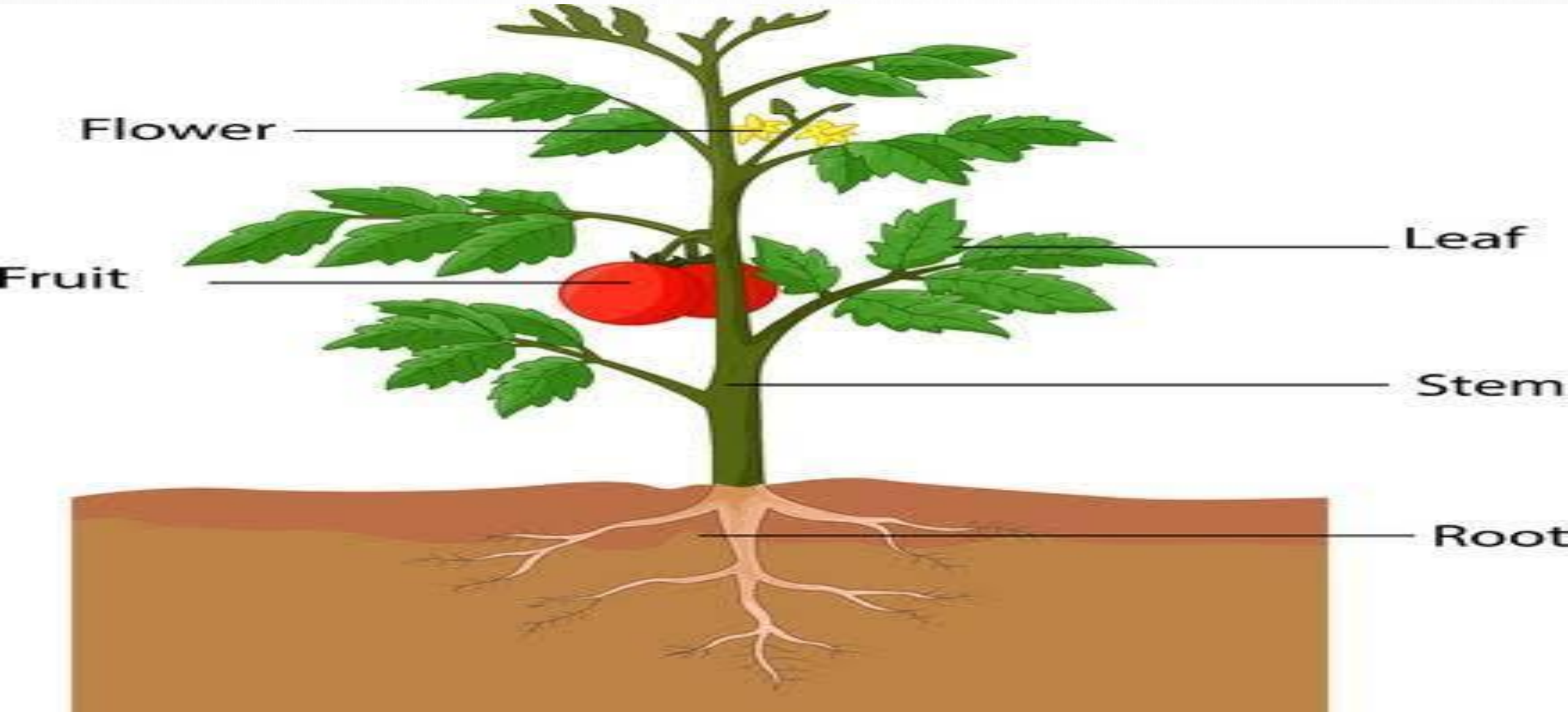
The leaves of some plants are used as plates.
Example: Banyan leaf, Banana leaf



The leaves of some plants are used to make cosmetics products. Example: Neem, Tulsi, Aloe vera, Mehandi

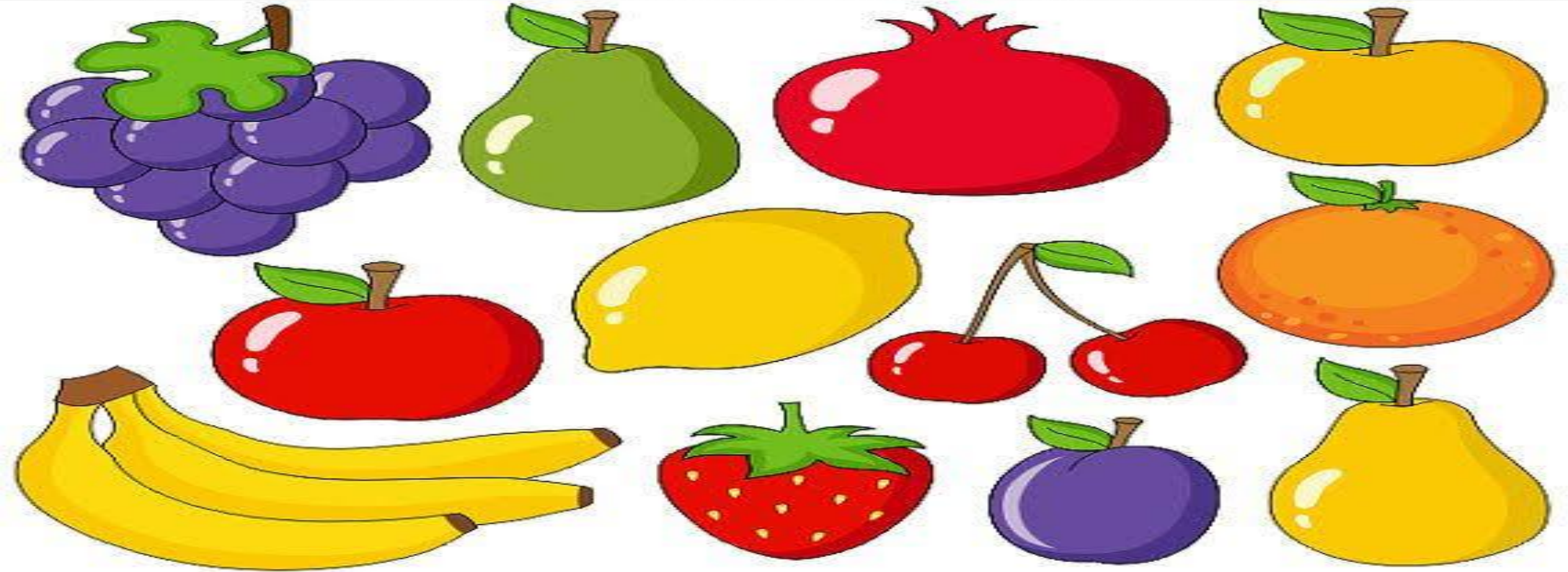


Different parts of a plant

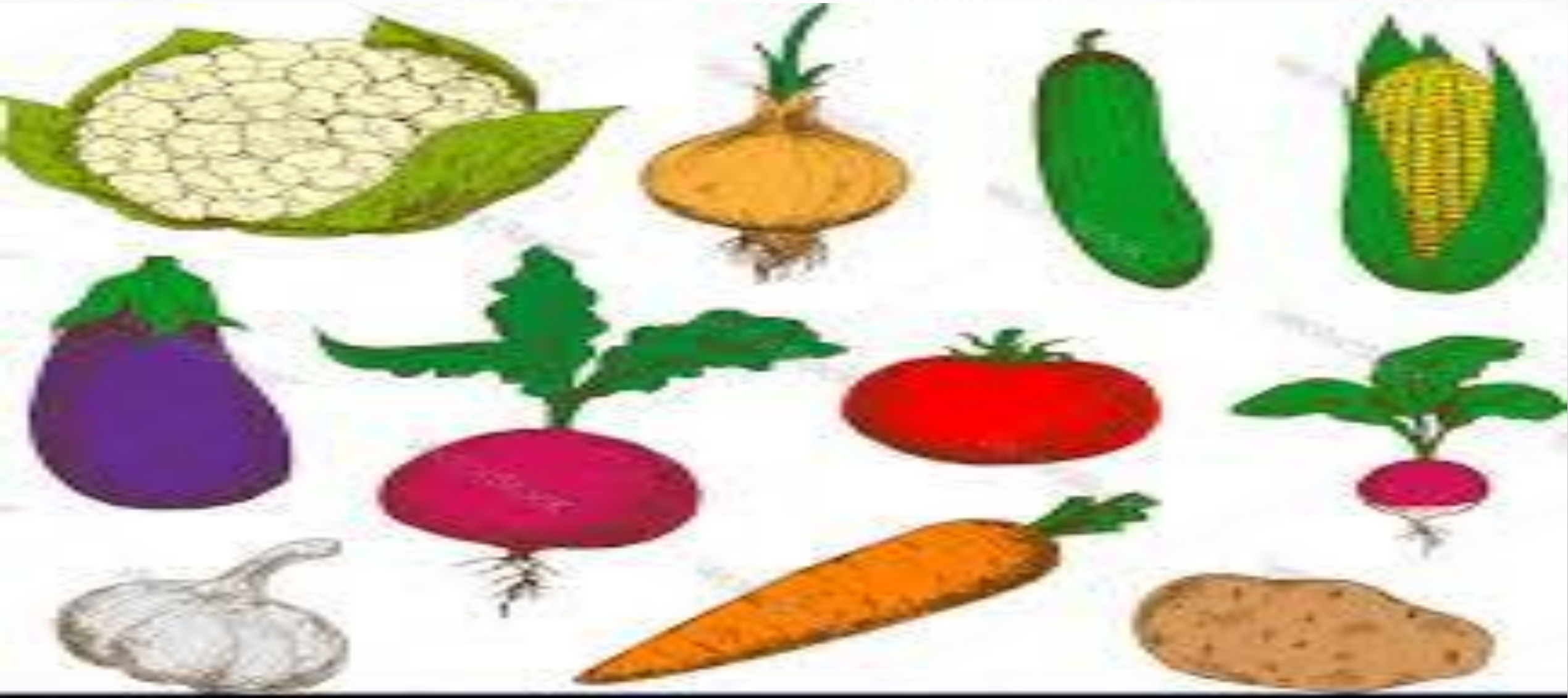


We get different food from plants:-

➤ *Plants give us fruits.*



- *Plants give us vegetables.*



- *We get cereals from plants.*



wheat



sorghum



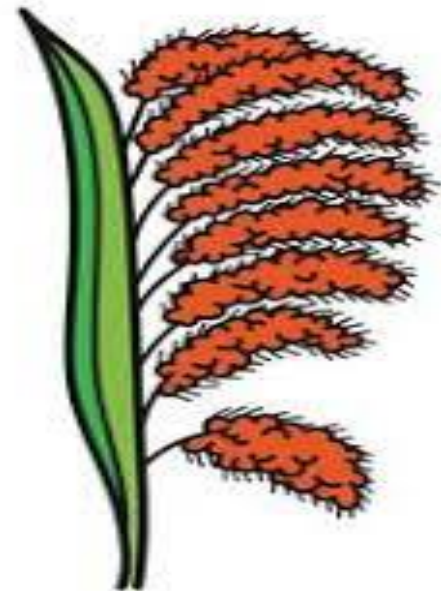
Rye



Rice



oat



millet

➤ *We get beans and pulses from plants.*



split pea



roman bean



red bean



chickpea



green pea



mixed bean



pink pea



split mung



mung bean



black bean



kinney bean



soybean



➤ *We get cotton from plant to make cloth.*



➤ *We get wood from tree to make furniture.*



➤ *We get paper from plants.*

